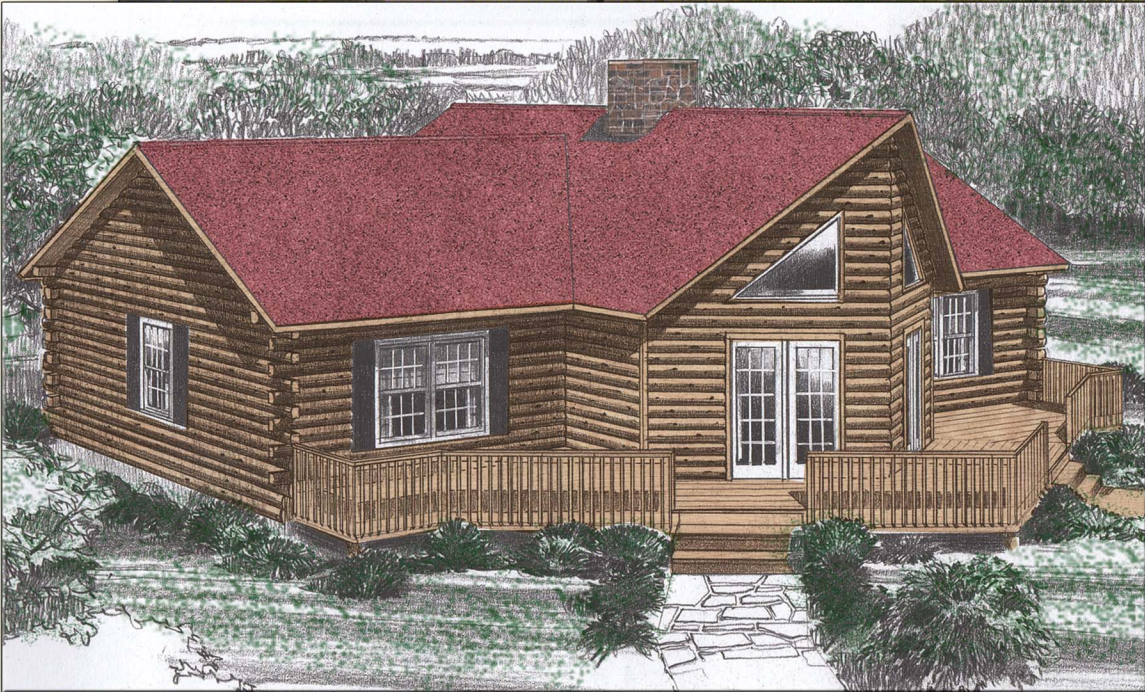




# The Regal



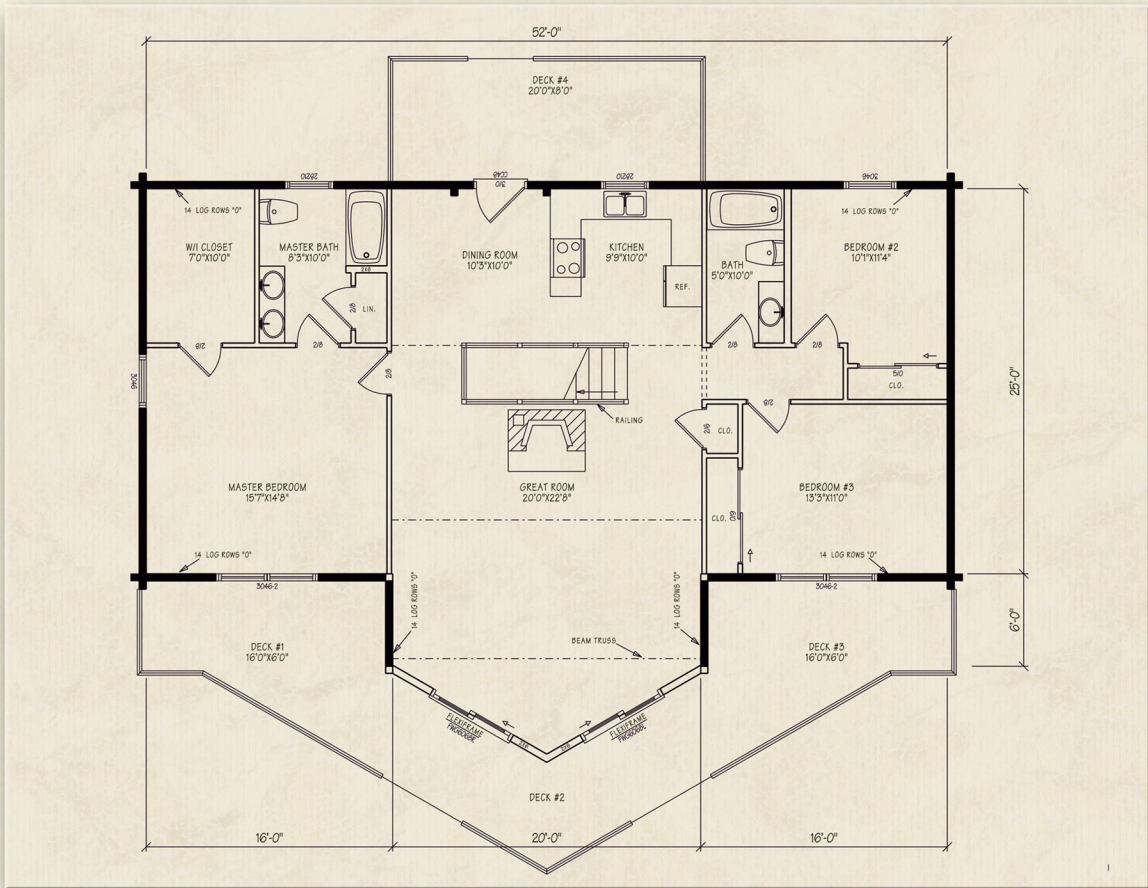
Northeastern Log Homes

[info@northeasternlog.com](mailto:info@northeasternlog.com) 800-624-2797 [www.northeasternlog.com](http://www.northeasternlog.com)

\*Artist's rendering, photography and optional design ideas may vary from the standard model. Please always consult the standard floorplan and refer to the Premier Series material list as to what is included.



# The Regal



Premier Home Series

31' x 52' Size

1,537 Square Feet

Three Bedrooms

Two Full Baths

Price information available for download on our website

**Optional Design Ideas:**

Grow the 6' prow sides out to 8' and bring the front wall straight across.

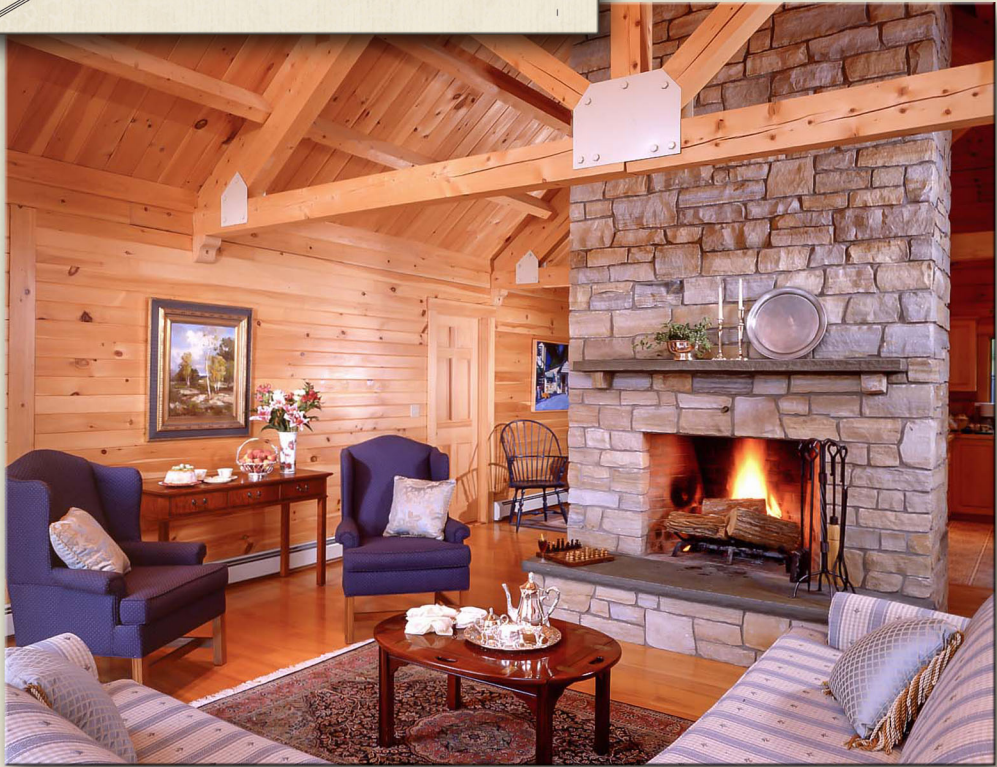
Add an entrance door or window to the left or right of the great room extension

Fireplace can move to the front of the home for a spectacular focal point

Change the Frenchwood doors on the front to larger size windows.

Move the stairs up against the master bedroom wall for a wide open great room

Consider 2 skylights in the great room to contribute to the brightness and openness of the great room layout



Northeastern Log Homes

info@northeasternlog.com 800-624-2797 www.northeasternlog.com

\*Artist's rendering, photography & optional design ideas may vary from the standard model. Please always refer to the standard floorplan and consult the Premier Home Series Material List as to what is included. All plans, photography and images copyright NLH 2016



# The Regal



Northeastern Log Homes

[info@northeasternlog.com](mailto:info@northeasternlog.com) 800-624-2797 [www.northeasternlog.com](http://www.northeasternlog.com)

\*Artist's rendering, photography and optional design ideas may vary from the standard model. Please always consult the standard floorplan and refer to the Premier Series material list as to what is included.

# The Regal

